

A collage of various MEAN WELL electronic components, including power supplies, converters, and modules, arranged in a grid-like pattern. The components are shown in a perspective view, with some overlapping. The background is white, and the components are in various colors like blue, grey, and black.

SUSTAINABLE  
DEVELOPMENT  
GROUP



# Landing Page Modify Introduction

MEAN WELL

▼ STEP1 Preparation

▼ STEP2 Install VScode

▼ STEP3 Edit webpage

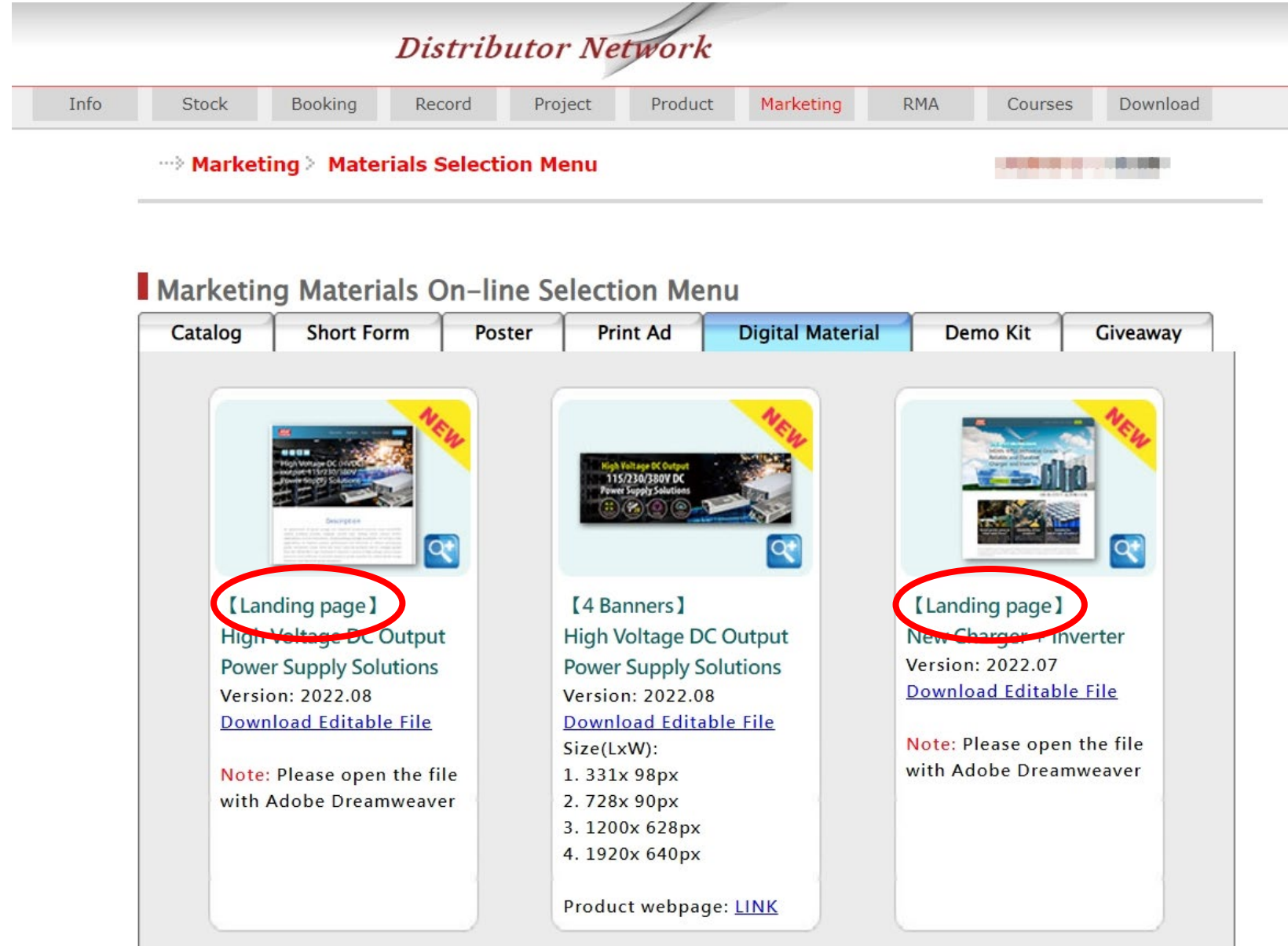
▼ STEP4 Completed

MEAN WELL

# STEP1 Preparation

## 1. Login the MW CRM

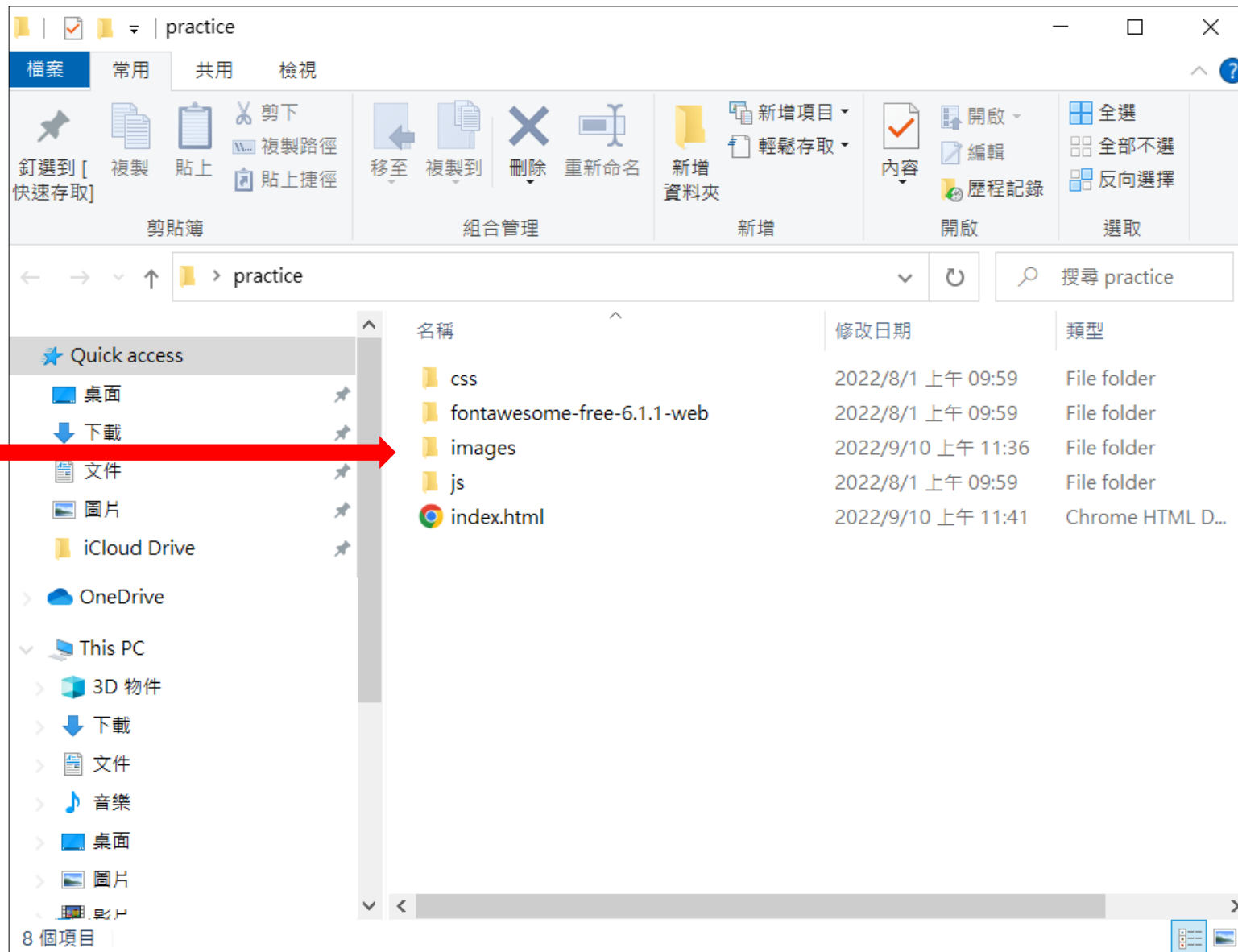
Download the landing page you need.



## STEP1 Preparation

## 2. Unzip the file

- Save the file to the appropriate place of your website
- Save your logo in the "images" folder



## STEP2 Install VS Code

# 1. Download Visual Studio Code

<https://code.visualstudio.com/Download>

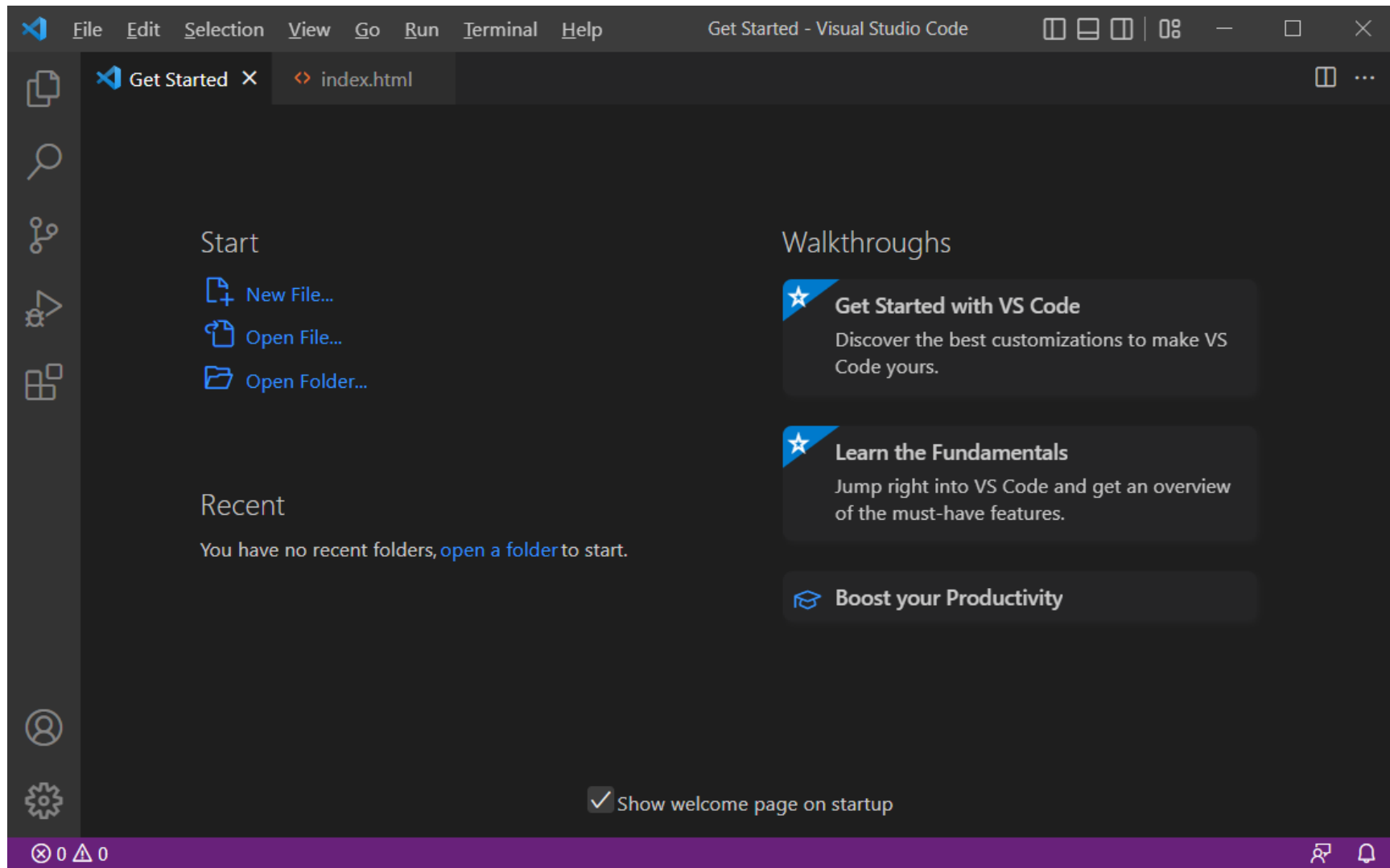
✂ If you have Adobe Dreamweaver, please edit the webpage with it!

# STEP2 Install VS Code

## 2. Install



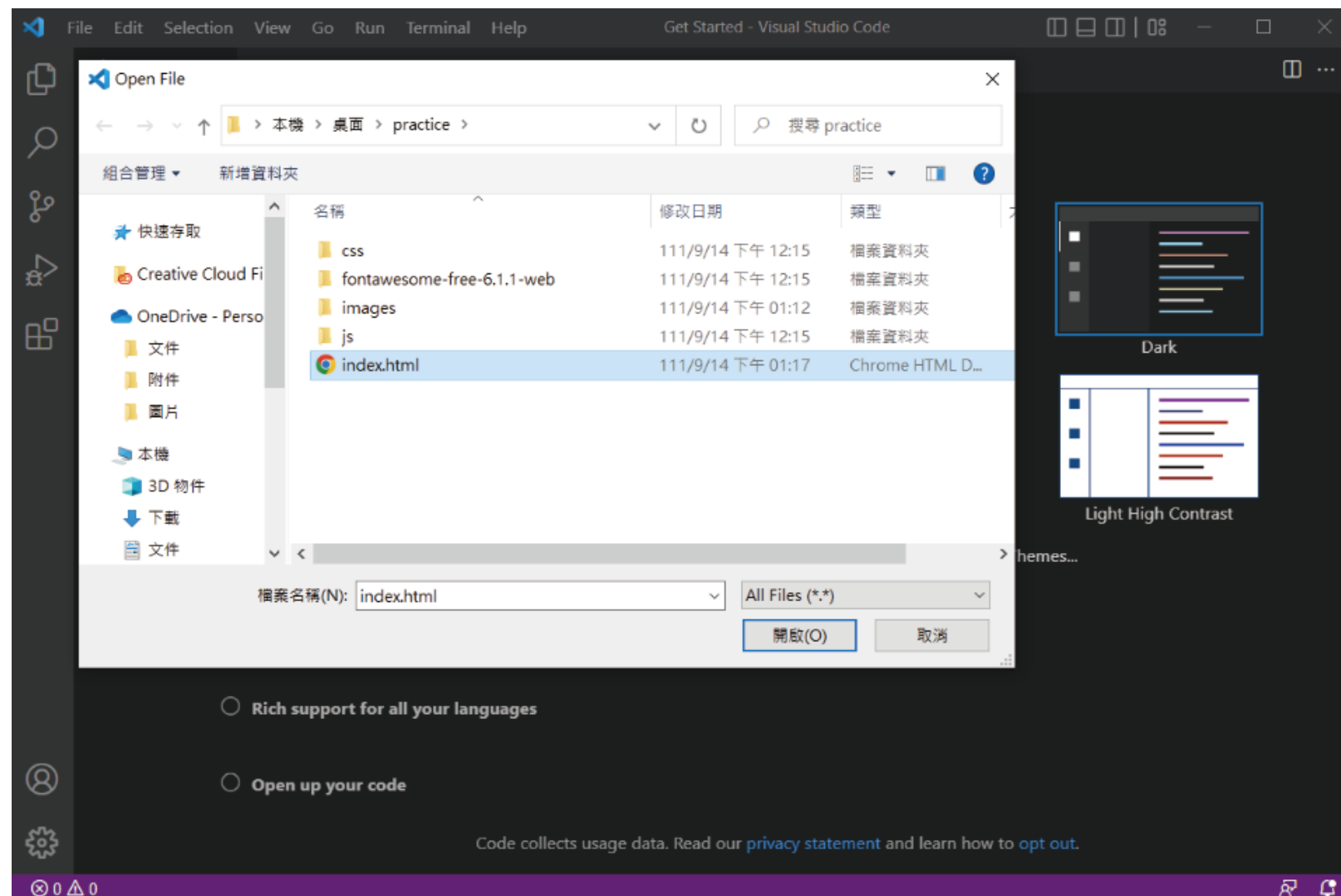
VSCoDeUserSet  
up-x64-1.71.0.ex  
e





## STEP3 Edit webpage

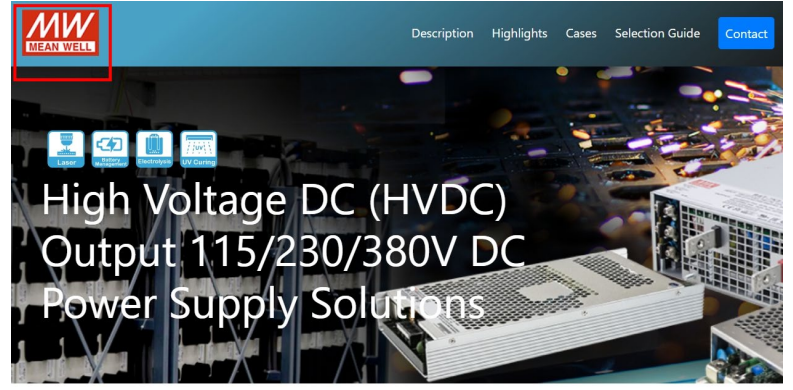
## 2. Open index.html



# STEP3 Edit webpage

## 3. Find the logo of the webpage

- a. 【Blue Circle】 "Ctrl+F " and type "logo" to find it.
- b. 【Red Circle+Yellow parts】 Replace with your logo's name and URL



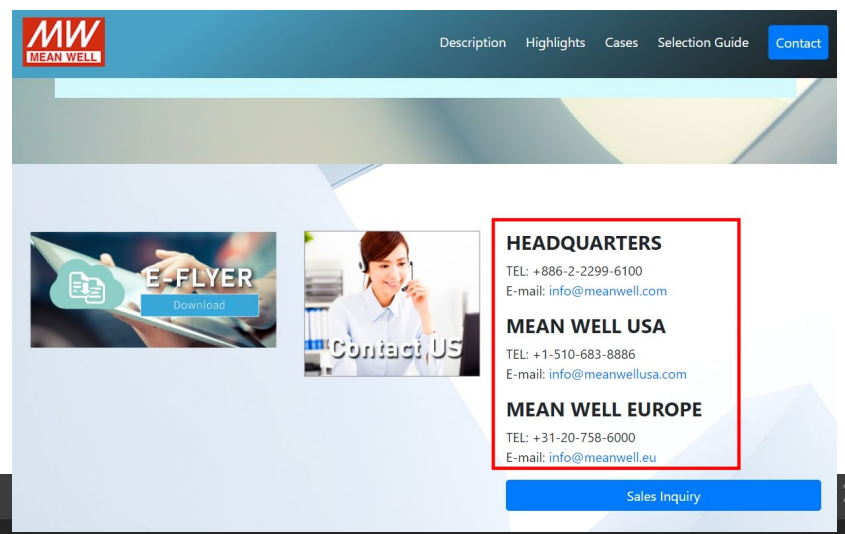
```
4 <meta charset="utf-8">
5 <meta http-equiv="X-UA-Compatible" content="IE=edge">
6 <meta name="viewport" content="width=device-width, initial-scale=1">
7 <title>MEAN WELL High Voltage DC (HVDC) Output: 115/230/380V Power Supply Solutions</title>
8 <!-- Bootstrap -->
9 <link href="css/bootstrap-4.4.1.css" rel="stylesheet">
10 <link href="css/scrolling-nav.css" rel="stylesheet" type="text/css">
11 <link href="fontawesome-free-6.1.1-web/css/all.css" rel="stylesheet" type="text/css">
12 </head>
13 <body style="padding-top: 70px" id="page-top">
14 <!-- body code goes here -->
15 <nav class="navbar fixed-top navbar-expand-md navbar-light bg-light">
16   <a class="navbar-brand" href="https://www.meanwell.com/" target="_blank"></a>
17
18   <button class="navbar-toggler" type="button" data-toggle="collapse" data-target="#navbarSupportedContent1" aria-controls="navbarSupportedContent1"
19   </button>
20
21   <div class="collapse navbar-collapse" id="navbarSupportedContent1">
22
23   <ul class="navbar-nav ml-auto">
24     <li class="nav-item active">
```



# STEP3 Edit webpage

## 4. Find the Contact Information

- a. 【Blue Circle】 "Ctrl+F "and type "headquarters" to find it.
- b. 【Red Circle+Yellow parts】 Replace with your information or remove it



```

File Edit Selection View Go Run Terminal Help index.html - Visual Studio Code
Get Started index.html x
D: > Landing Page > HVDC > HTML > EN > index.html > html > body#page-top > section#contact.contact-section > div.container > div.row > div.row > div.col-md-5.col-8.text-left > div.row > div.col-
421 <div class="row">
422   <div class="col-md-12">
423
424     <h4><b>HEADQUARTERS</b></h4>
425     <p>TEL: +886-2-2299-6100<br>
426     E-mail: <a href="mailto:info@meanwell.com" target="_blank">info@meanwell.com</a> </p>
427
428     <h4><b>MEAN WELL USA</b></h4>
429     <p>TEL: +1-510-683-8886<br>
430     E-mail: <a href="mailto:info@meanwellusa.com" target="_blank">info@meanwellusa.com</a> </p>
431
432     <h4><b>MEAN WELL EUROPE</b></h4>
433     <p>TEL: +31-20-758-6000<br>
434     E-mail: <a href="mailto:info@meanwell.eu" target=" blank">info@meanwell.eu</a> </p>
435   </div>
436   <div class="col-md-12"><a class="btn btn-primary" href="https://www.meanwell.com/serviceBusiness.aspx" target="_blank">Sales Inquiry</a>
437 </div>
438
439 </div>
440 </div>
441 </div>
  
```

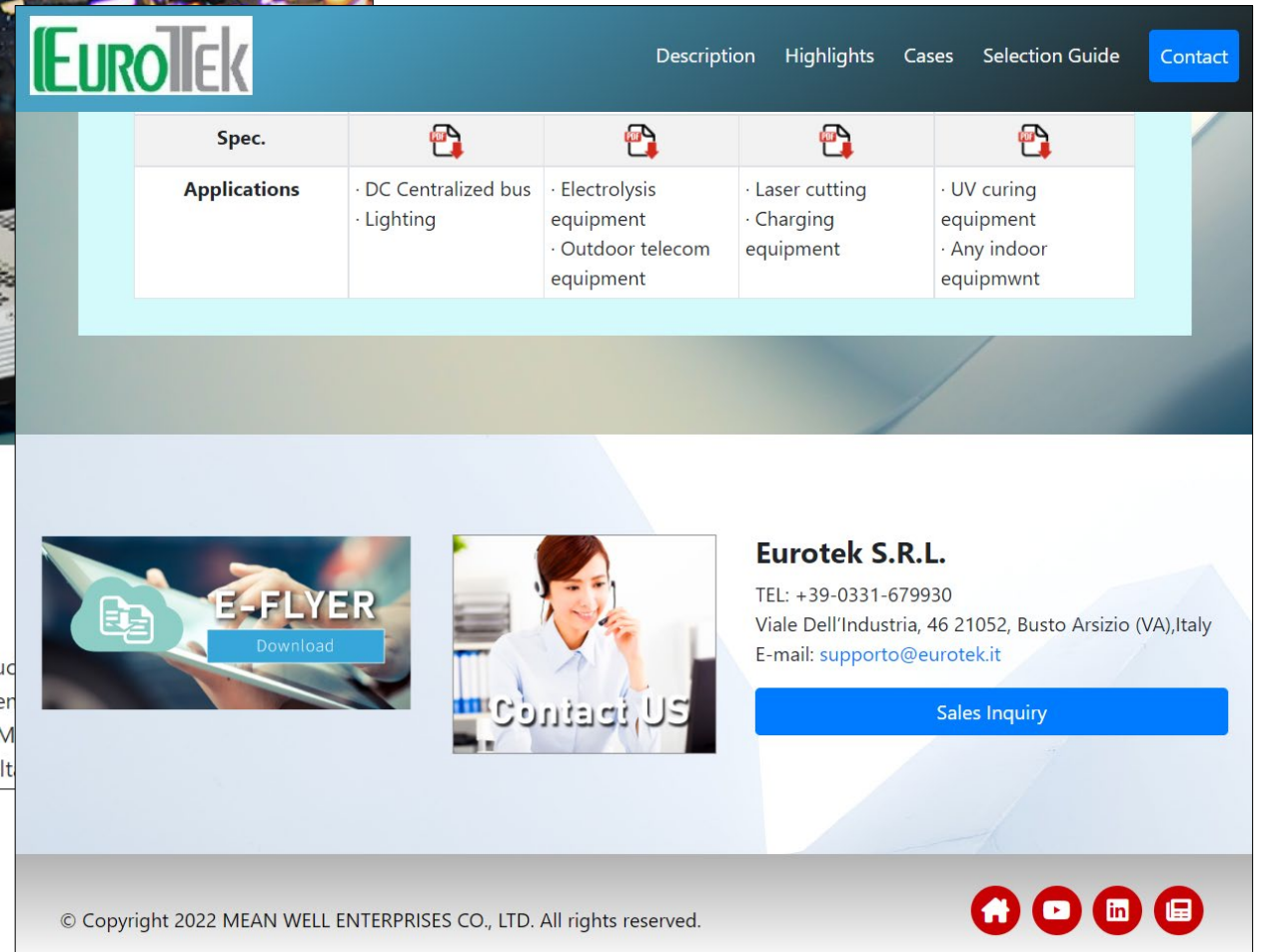
headquarters 1 of 1

X



## Description

As applications of green energy and industrial products become more diversified, related product direct current (HVDC) applications directly, such as electrolysis, charging energy storage equipment to improve product performance and eliminate or reduce unnecessary power conversion losses. Many use DC voltages greater than 60V. MEAN WELL has continued to develop a variety of high-volt





*Your Reliable Power Partner*