

A collage of various MEAN WELL electronic components, including power supplies, converters, and control units, arranged in a grid-like pattern. The components are shown in various orientations and colors, primarily in shades of grey, blue, and white. The collage is partially obscured by a large red arrow pointing towards the right.

SUSTAINABLE
DEVELOPMENT
GROUP



Landing Page Modify Introduction

MEAN WELL

▼ STEP1 Preparation

▼ STEP2 Install VScode

▼ STEP3 Edit webpage

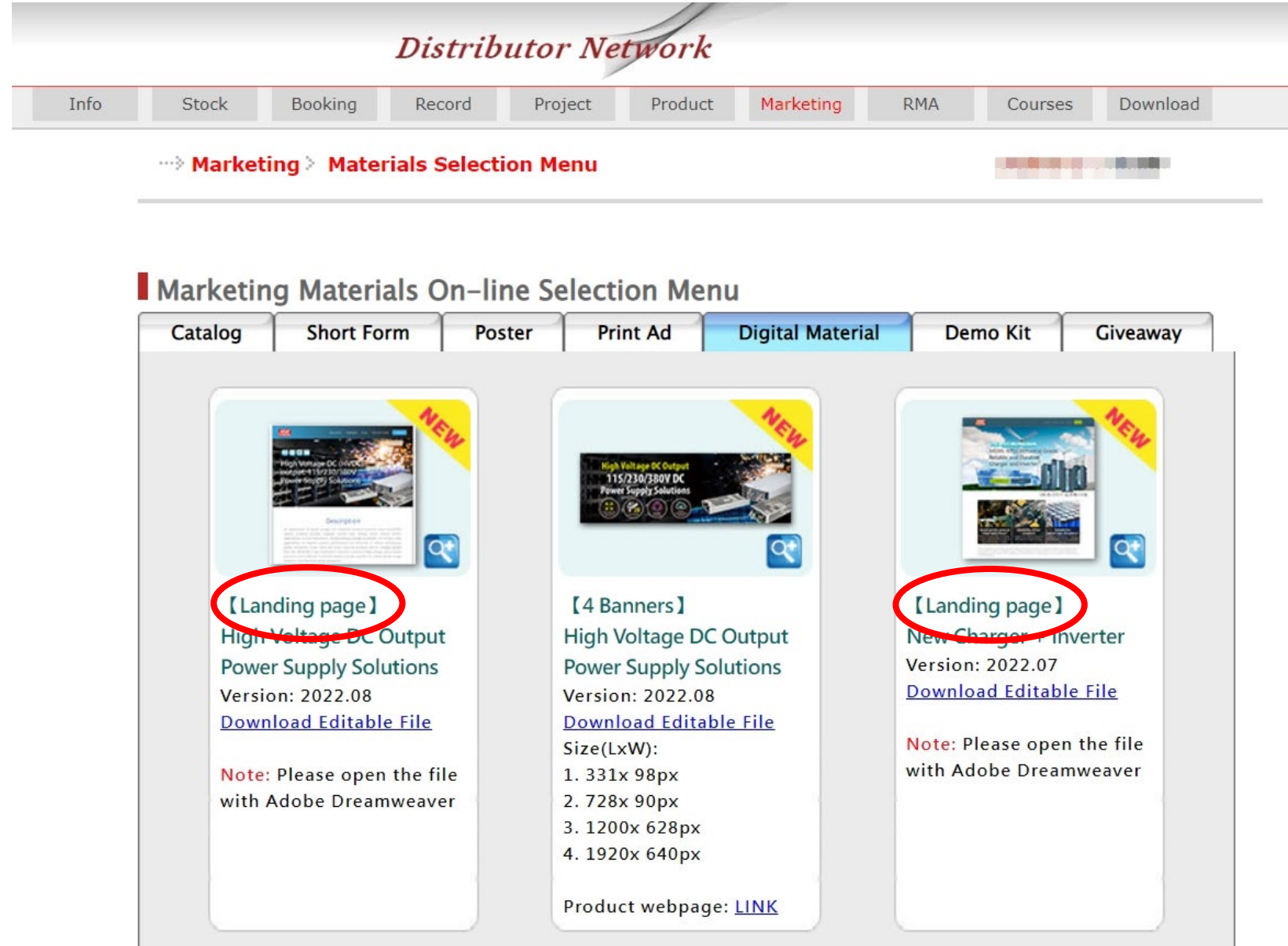
▼ STEP4 Completed

MEAN WELL

STEP1 Preparation

1. Login the MW CRM

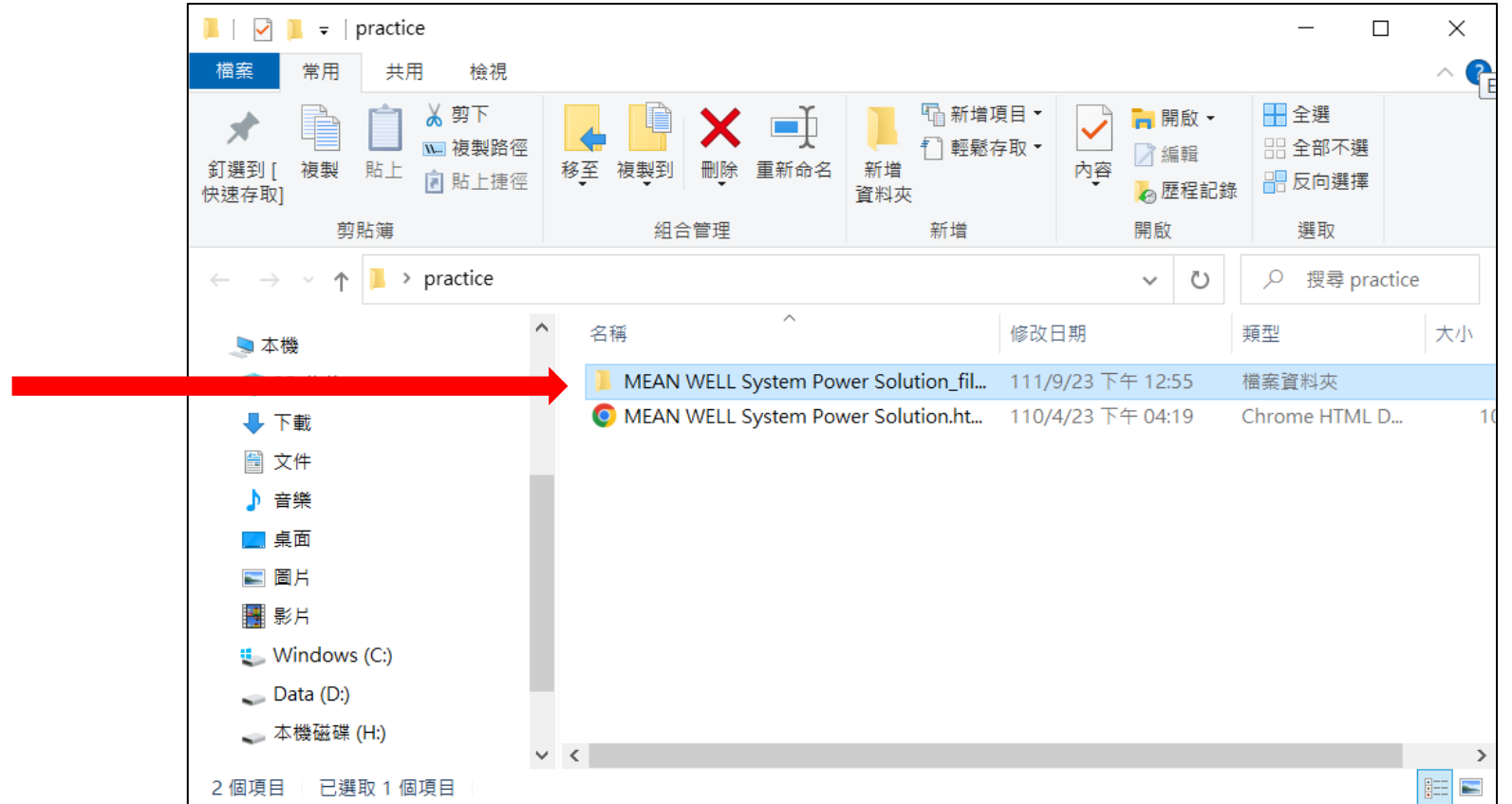
Download the landing page you need.



STEP1 Preparation

2. Unzip the file

- Save the file to the appropriate place of your website
- Save your logo in this folder



STEP2 Install VS Code

1. Download Visual Studio Code

<https://code.visualstudio.com/Download>

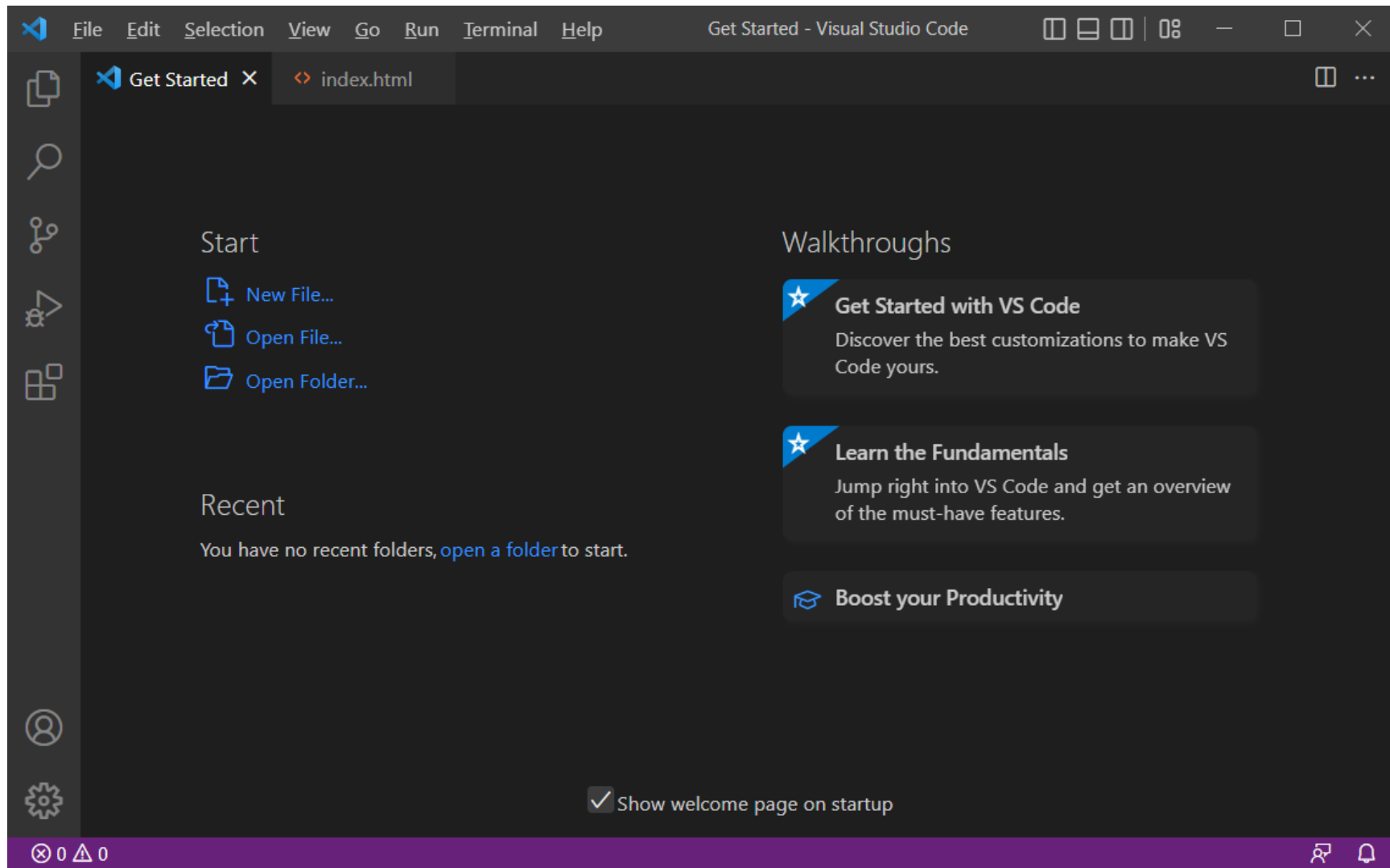
✂ If you have Adobe Dreamweaver, please edit the webpage with it!

STEP2 Install VS Code

2. Install

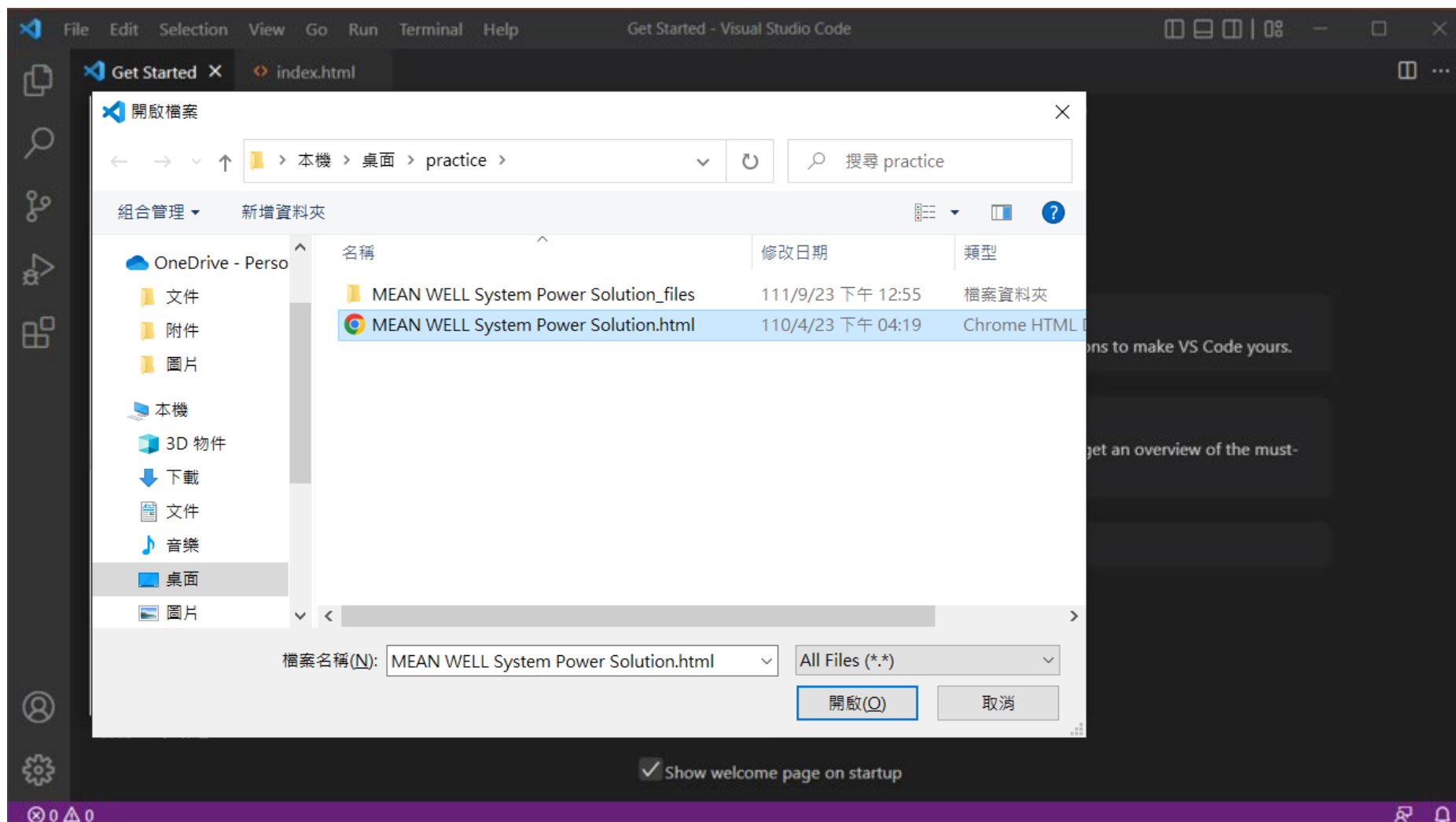


VSCoDeUserSet
up-x64-1.71.0.ex
e



STEP3 Edit webpage

2. Open index.html



STEP3 Edit webpage

3. Find the logo of the webpage

【Yellow line】

Find the **LINE 466**, and replace with your logo's name and URL.



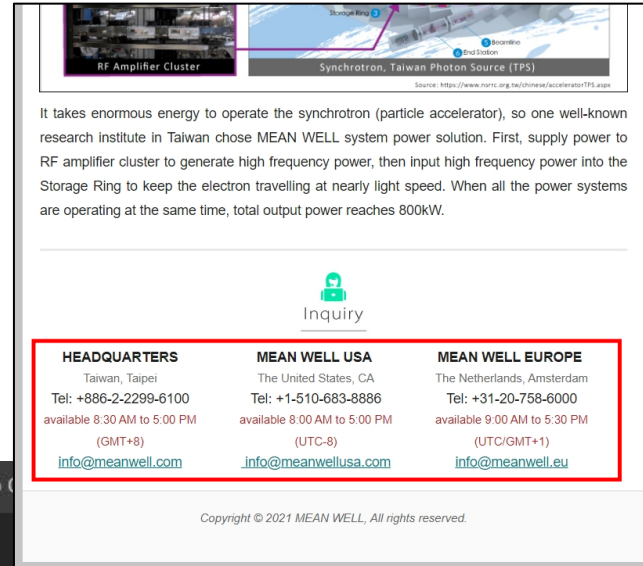
```
File Edit Selection View Go Run Terminal Help MEAN WELL System Power Solution.html - Visual Studio Code
Get Started MEAN WELL System Power Solution.html 9+ x
td#templateHeader > table.mcnImageBlock > tbody.mcnImageBlockOuter > tr > td.mcnImageBlockInner > table.mcnImageC
459 <tbody class="mcnImageBlockOuter">
460 <tr>
461 <td valign="top" style="padding: 9px;mso-line-height-rule: exactly;-ms-text-size-adjust: 100%;-webkit-text-size-adjust: 100%;" class="mcn
462 <table align="left" width="100%" border="0" cellpadding="0" cellspacing="0" class="mcnImageContentContainer" style="min-width: 100%;b
463 <tbody><tr>
464 <td class="mcnImageContent" valign="top" style="padding-right: 9px;padding-left: 9px;padding-top: 0;padding-bottom: 0;mso-lir
465
466 <a href="http://www.meanwell.com/" title="" class="" target="_blank" style="mso-line-height-rule: exactly;-ms-text-si
467 
469
470 </td>
471 </tr>
472 </tbody></table>
473 </td>
474 </tr>
475 </tbody>
```


STEP3 Edit webpage

4. Find the Contact Information

Remove **LINE 1406-1418**, and **LINE 1315-1328**.

Replace the yellow lines with your contact information.



```

File Edit Selection View Go Run Terminal Help MEAN WELL System Power Solution.html - Visual Studio
Get Started MEAN WELL System Power Solution.html 9+ x
C:\Users\nicole\Desktop\practice\MEAN WELL System Power Solution.html\html\body#archivebody\center\table#bodyTable\tbody>tr>td#bodyCell\table.templateContainer\tbody>
1347 <![endif]-->
1348 <table align="left" border="0" cellpadding="0" cellspacing="0" style="max-width: 100%; width: 100%; border-collapse: collapse;">
1349 <tbody><tr>
1350 <td align="center" colspan="3" style="padding: 10px 0 10px 0;">
1351 <td valign="top" class="mcnTextContent" style="padding-top: 0;padding-right: 18px;padding-bottom: 9px;padding-left: 18px;mso-line-height-rule: exactly;">
1352 <div style="text-align: center;">
1353 <span style="font-size: 14px;"><strong>MEAN WELL USA</strong></span><br>
1354 <span style="color: #696969;"><span style="font-size: 12px;">The United States, CA</span></span><br>
1355 <span style="font-size: 14px;">Tel: +1-510-683-8886</span><br>
1356 <span style="font-size: 12px;"><span style="color: #B22222;">available 8:00 AM to 5:00 PM (UTC-8)</span></span><br>
1357 <span style="font-size: 14px;"><a href="mailto:info@meanwellusa.com?subject=NMP%20series%20inquiry" target="_blank" style="mso-line-height-rule: exactly;">info@meanwellusa.com</a></span>
1358 </td>
1359 </tr>
1360 </tbody></table>
1361 <!--[if mso]>
1362 </td>
1363 <![endif]-->
1364 </tbody></table>
1365 </div>

```

STEP4 Completed



Since ultra-high-power output and power management 2-in-1 integral solution is what high-end markets are looking for at present, MEAN WELL creates complete, flexible and resilient system power solutions for various industries. It can supply 128kW+ ultra-high power, and features



...s energy to operate the synchrotron (particle accelerator), so one well-known in Taiwan chose MEAN WELL system power solution. First, supply power to ...er to generate high frequency power, then input high frequency power into the ... keep the electron travelling at nearly light speed. When all the power systems ...he same time, total output power reaches 800kW.


Inquiry

**Simcona Electronics of
Canada Inc.**

3422 Wonderland Road
SouthLondon Ontario Canada
N6L 1A7

Tel: +1-800-567-3815
info@simcona.ca



Your Reliable Power Partner